



Card Series

WearHeld Scanners

 ANSWK®

CONTENTS

Appearance

Part.1

Characteristic

Part.2

Usability

Part.3

Performance

Part.4

Models

Part.5

Accessories

Part.6



*Inspired by Cards,
Change in Wearable*

— Easy to Carry and Use



CARD SERIES



The graphic is the CARD SERIES Scanner logo

Part 1 Appearance

Fashion

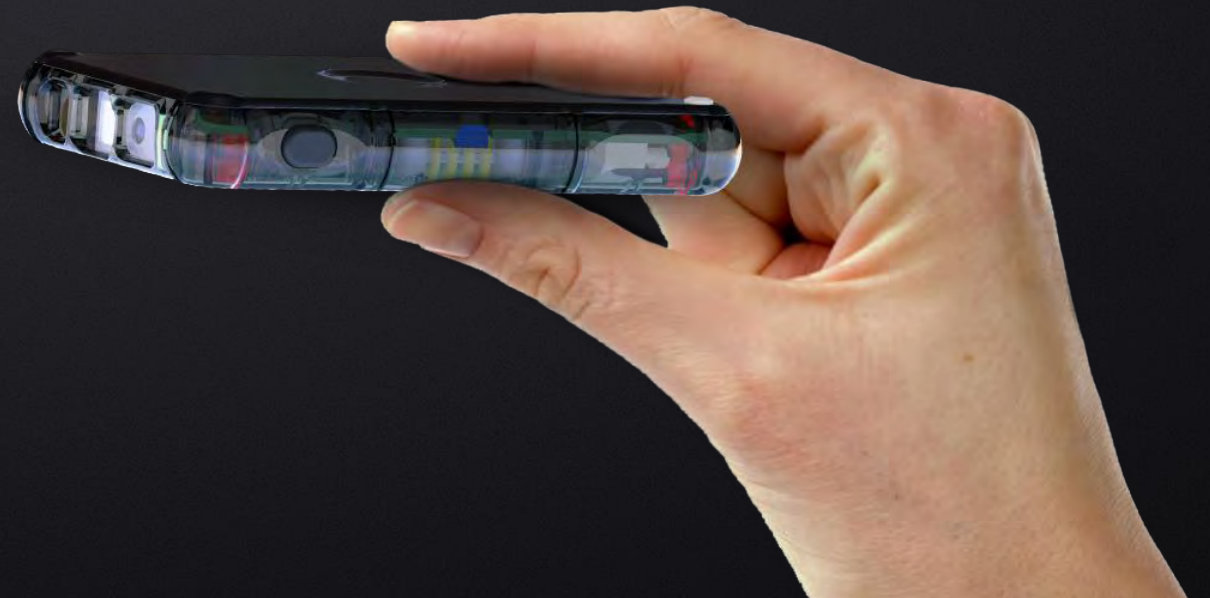
CARD SERIES WearHeld Scanner is a great integration with advantages of handheld scanner, pocket scanner and wearable scanner, which have the design of stylish appearance and rugged construction and powerful multiple functions.

Thin and Rugged

Mellow and Smart

Simple and Stylish

Smooth and Comfortable



Part 1 Appearance

Strength

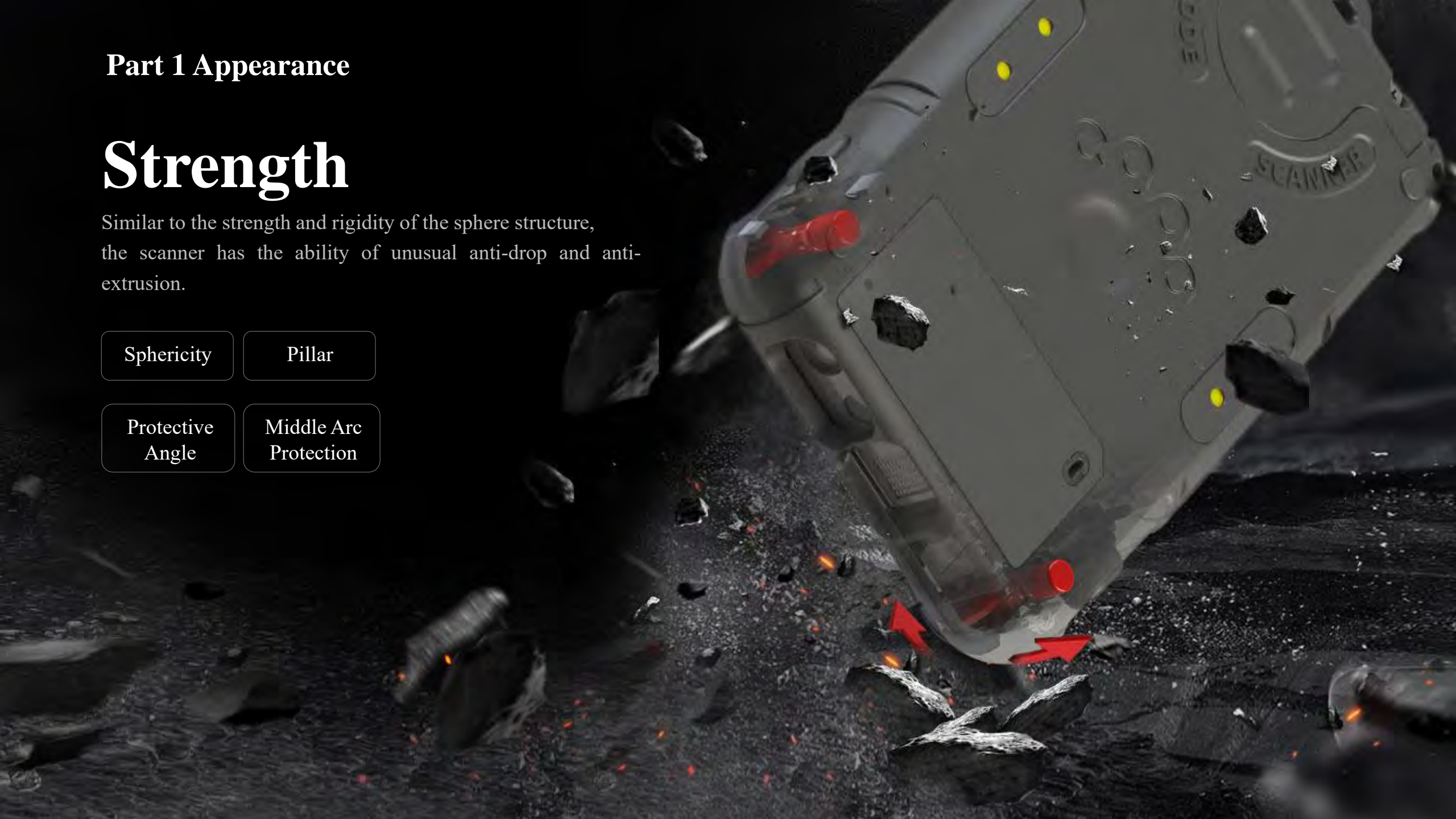
Similar to the strength and rigidity of the sphere structure, the scanner has the ability of unusual anti-drop and anti-extrusion.

Sphericity

Pillar

Protective
Angle

Middle Arc
Protection



WearHeld-Scanner

Self-illuminated Information Display
Invisible OLED Screen

Power / Touch Four
Leaf Clover Indicator

Light Strip Status Indicator

Charging Status
Visual Silicone Pad

Part 1 Appearance

Visibility

Integrated Visual Housing

The scanner is designed on the basis of the same size of credit card, which has a familiar and comfortable grip feeling and is easy to carry and use.



Part 2 Characteristic

Card

Housing



Wear

Part 2 Characteristic

Wearable

Wear on Fingers

Wear on Hands



Held

Part 2 Characteristic

Handheld

Hand Hold

Strap Hold



To fix this scanner on the back of phone case, it integrates with the phone as a handheld scanning terminal.

Part 2 Characteristic

Attach

Follow Classic

Integrated Handheld

Attach



Part 2 Characteristic Portable

Multiple Wearable Methods
Easy to Move

Wear on
the Chest

Wear on
the Belt

Wear on
the Wrist

Wear on
the Waist

Wear on the
Pocket

Wear on
the Arm

Portable

Tail Level signal Interface

Rear level signal Interface

Double Side Buttons

Part 2 Characteristic

Control

Multiple Interfaces

Multiple Modes

Front Touch Button

Bluetooth Wireless Interfaces



Fingertip Touch, Multiple Operations, Excellent Ergonomics, Lightweight and Slim, Independent and Replaceable, it can be transformed to handheld scanner rapidly.



Part 2 Characteristic

Glove Trigger

Wear on Hand

&

Glove Trigger



Part 2 Characteristic

Ring Trigger

Wireless Operation to Prevent Interference,
Tiny and Simple Ring Bring the Good Feelings

Wear on Hand

&

Ring Trigger

Part 2 Characteristic

Handheld Trigger

Comfortable operation and firm grip. If you don't operate the scanner, which can be worn on the back of the fingers rapidly to free your hands

Strap Hold

&

Handheld Trigger



Part 3 Usability

Scanning

No configuration required,
both of common scanning modes
can be used simultaneously.

Discontinuous Dominoes
Mode Scanning

High-frequency Inching
Mode Scanning



Part 3 Usability

Communications

With NFC, workers can close to CARD Scanner on mobile phone for communication.

NFC



* smart phone has Bluetooth and NFC function.

Part 3 Usability

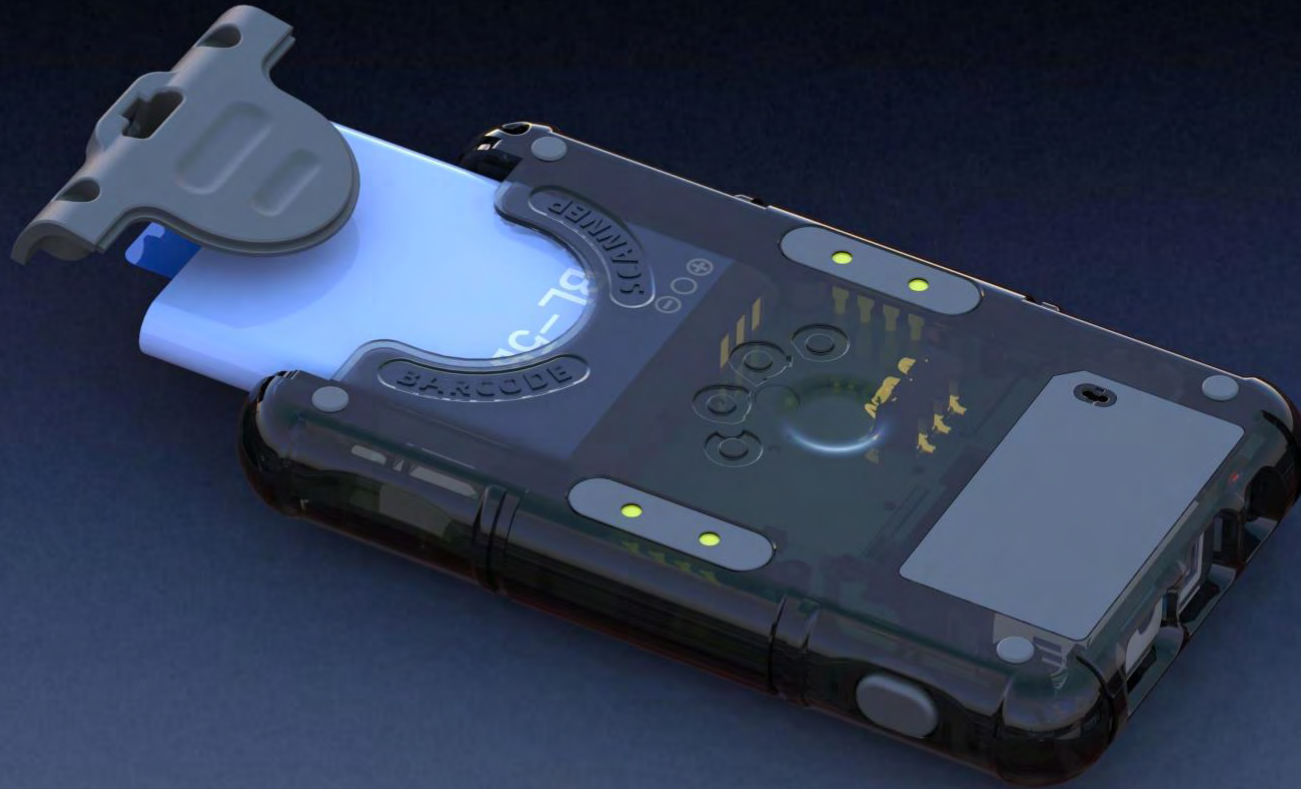
Power

General Specifications

Built-in and Replaceable

Long Battery Life

Low-temperature Environment



Small Size
Large Capacity
High Energy Density
Battery with Handle for Removing

BL-5B Li-ion
Rechargeable Battery

Battery

Part 3 Usability

Charging

Different charging positions and modes meet the different requirements and operating methods.



Magnetic Interface

Fast Charging

TYPE-C Interface



Qi Wireless

Standard Charging

Part 3 Usability

Fill Light

Close to scan engine window, the optical cavity provides additional optical performance.

Laser Spot Indication



Special Illumination





Part 4 Performance

Scan Engine

Integrated with general, Zebra or Honeywell scan engines, to meet with the needs of users

1D and 2D

Short range and Extended mid-range Scanning Distance

High Density Damaged

Laser and Imaging

Economy and Performance

Part 4 Performance

Chip

The core hardware adopts high-performance chip “System on Chip”, SoC, the integrated module with metal shield Industrial grade components

SoC

High
integration

Excellent
Performance

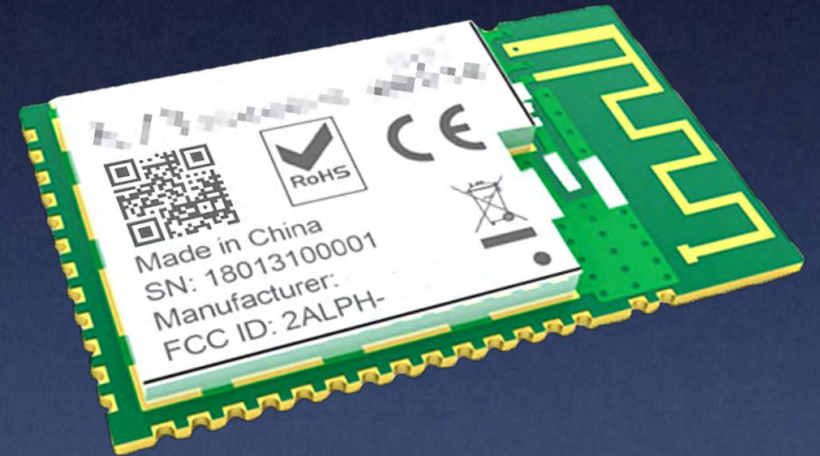
Anti-
interference

Bluetooth5.0

Low power
consumption

Master and Slave Mode

SoC Chip: connect the high-performance ARM CORTEX-M4F core with the RF generator and protocol stack of Bluetooth 4.2 and Bluetooth 5.0, this module integrates with CPU, Bluetooth, Storage, IO, etc.



Part 4 Performance

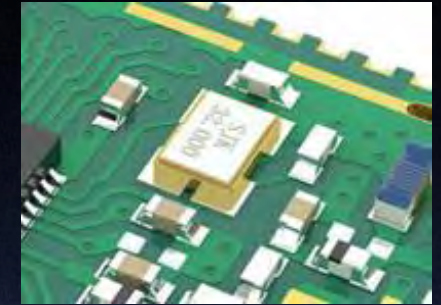
Mainboard

With adopting high-performance components and industrial product design, it improves the quality and applicability of the scanner.

High-Performance
Components



Brand High-
performance



Industrial
Crystal



Clock
Oscillator



High Quality
Component

Part 5

Models

- Three Series: CARD0, CARD2, CARD3
- Two Colors Housing: Obsidian Black and Snow crystal White



Obsidian Black

Snow crystal
White

Part 5

Models



- CARD2-CCD
- C2815
- Zebra SE655
- Standard range
- about 45 hours



- CARD2-lite
- C2217
- Zebra SE2707
- Secondary standard range
- about 32 hours



- CARD0-lite
- C0114
- Y400
- Near range
- about 17 hours



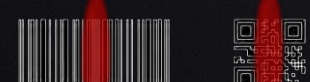
- CARD0
- C0216
- Y600P
- Secondary standard range
- about 17 hours



- CARD0-laser
- C0919
- UE966
- Secondary standard range
- about 52 hours



- CARD3-BH46
- C3316
- Honeywell N4680
- Standard range
- about 28 hours



- CARD3-BZ41
- C3317
- Zebra SE4107
- Standard range
- about 22 hours

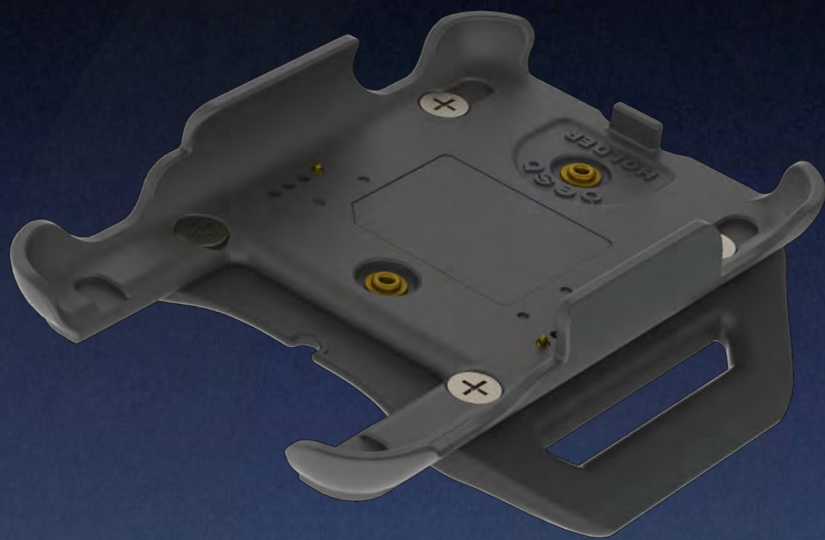


- CARD3-laser
- C3919
- Zebra SE965
- Extended mid-range
- about 50 hours



Part 6 Accessories

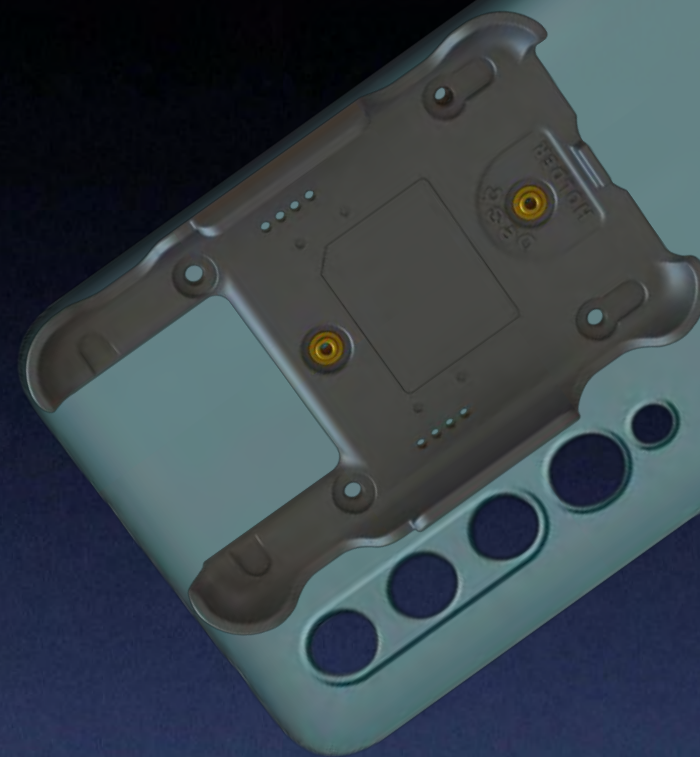
Holders



Multi-purpose Holder for Glove Trigger(MPH-GT)



Multi-purpose Holder for Handheld (MPH-HH)



Multi-purpose Holder for Phone Case (Sled) (MPH-PC)

These holders are used for assisting Card Scanners to implement the ability of wear, handheld and sled, etc. In addition, the holders can provide the protection for Card scanners.

MPH

Part 6 Accessories

Triggers



TOUCHUNIT Ring: Smart Design to Trigger by Ring

Ring

Bluetooth

Smart and
Comfortable

Delicate and
Durable

Suitable for
Phone

Multiple Sizes

Patent
Technology

Labor Protection
of Anti-Cut

Breathable and
Washable

Gloves



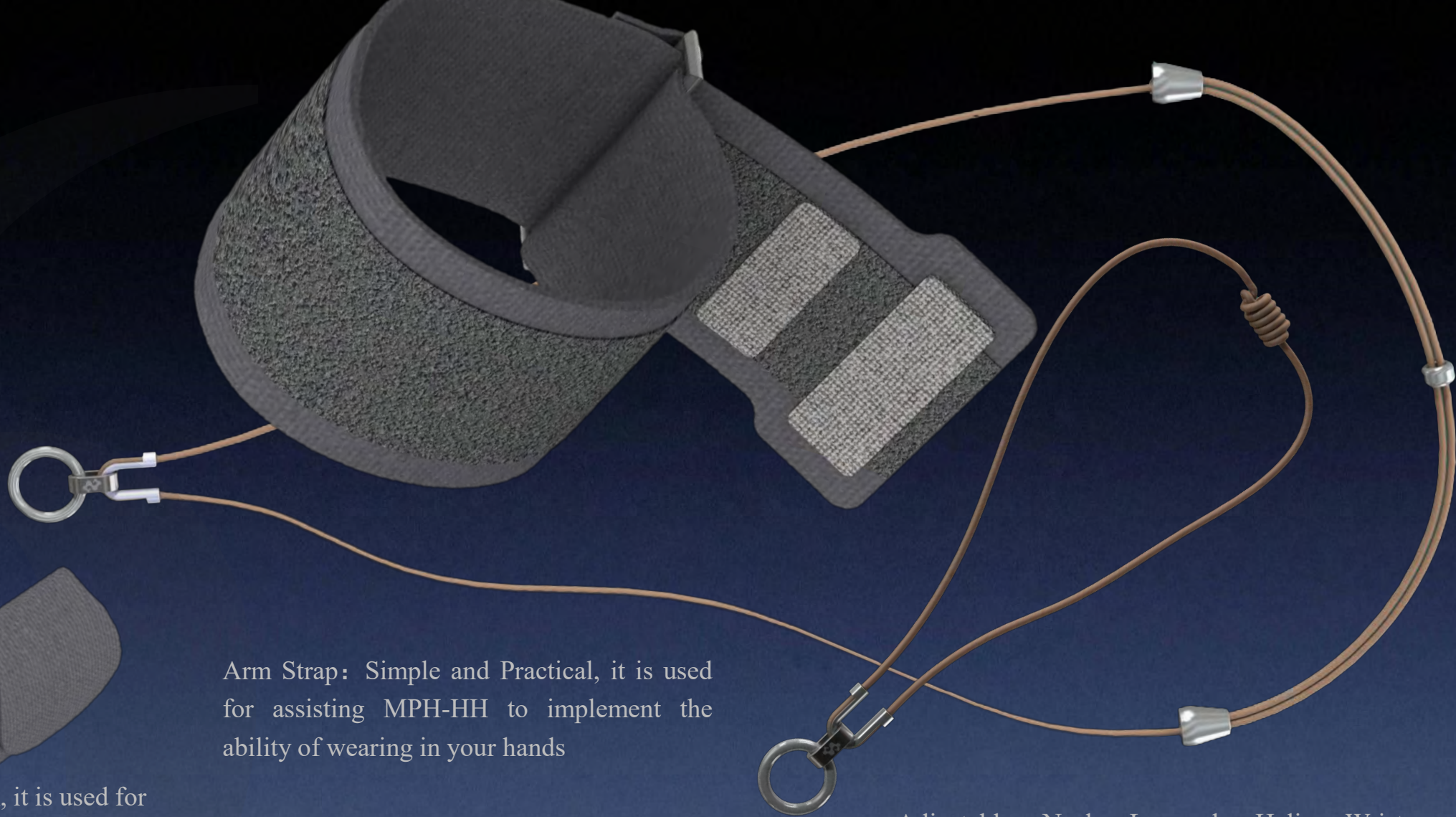
TOUCHUNIT Gloves: Innovative Design and Ergonomics,
Multiple trigger modes by finger tip to reduce one finger tip
operation under long time and high frequency, to avoid the risk of
strain.

Part 6 Accessories

Wears



Q Type Strap: patent design, it is used for assisting MPH-GT to implement the ability of wearing in your hands



Arm Strap: Simple and Practical, it is used for assisting MPH-HH to implement the ability of wearing in your hands

Adjustable Neck Lanyard, Helix Wrist Lanyard: it is used for hanging MPH-HH.

Straps

Breathable and Washable

Break Automatic Protection

Skin and Environment Friendly

Adjustable Length

Oxhide Material

Lanyard

Part.6

Other Accessories



APPLICATION



Retail



Warehouse



Sales



Assembly



Inventory



Maintenance



Ticket



Tracking



Store



Logistics



Property



Distribution



ANSWK[®]

Published

www.answk.com